

University Collections Annual Review

1 August 2009 – 31 July 2010



Contents

	Page
Introduction	3
Director's Summary	3
Acquisitions and Donations	4
Projects (a selection)	6
Teaching and Research Support	8
Outreach and Cultural Programming	11
Development (including fundraising, publicity and marketing)	14



Introduction

University Collections consists of a number of related collections and services distributed around the University and covering libraries, museums and galleries. They serve the needs of the University in teaching and research and provide a platform for cultural engagement and exchange and knowledge transfer. Other collections managed within the Schools, such as the School of Scottish Studies Archive and the Natural History Collection at Kings Buildings, have a close relationship with University Collections for policy guidance, collections support, project development and compliance with external standards. The areas directly managed by University Collections are:

- Director of Collections Office (DUC Office)
- Special Collections and University Archives
- Lothian Health Services Archive (LHSA)
- General Collections and Collections Management
- Museums Support Team
- University Collections Digital Projects
- Talbot Rice Gallery (TRG)
- Edinburgh University Collection of Historic Musical Instruments (EUCHMI)

Areas supported by University Collections, but not directly managed, include: School of Divinity Special Collections, School of Scottish Studies Archive, Ashworth Natural History Collection, Geology Collection, Anatomy Collection and Anatomy Resource Centre, and the Polish School of Medicine Collection.

Director's Summary

This short annual review presents a selection of activity across University Collections. All of the information laid out here has been gathered for other purposes, such as project reports, providing library statistics, or reporting progress against spending to the many funders who support our work. Some points deserve to be highlighted, notably the successful implementation of a Disaster Response and Recovery Plan across University Collections. This was a major initiative, and one which many institutions have tried to do but failed. It is a credit to the work of staff in University Collections that this was done, in particular to Jacky MacBeath, Museums Development Manager and Ruth Honeybone, Conservator and Acting Head of LHSA.

It is clear that we must strive to find innovative ways of getting work done in collections and the recent arrangement with a commercial conservator Caroline Scharfenberg is one such example. For a trial period of one year, we have agreed to trade her use of a modest space in our Conservation Unit for a working day of Caroline's time on our collections and a two-hour consultancy with University Collections curators each week. Finally, it is our view that physical collections seem to be growing in importance in the Digital Age rather than declining. The Centre for Research Collections (CRC) recorded a 100% increase in productions to the reading room in the reporting period, a remarkable statistic which seems to suggest that improved facilities, dedicated staff and targeted marketing can work wonders.

We know the collections are world-class – our challenge is to let everyone know about it.

John Scally, Director of Collections.

Acquisitions and Donations

General Collections

The General Collections team continued to support the identification and dissemination of print acquisitions in 2009/2010. 25,373 items were handled by the book processing team labelling and shelving new acquisitions.

CRC: Special Collections and University Archives

651 acquisitions were recorded across rare books, manuscripts and archives databases. Key examples include the following.

- Films of the award winning Eric Lucey (1923 – 2010), who ran the Institute of Animal Genetics Research Film Unit. His collection features leading medics and scientists, as well as films focusing on specific teaching/research issues and aspects of Edinburgh University life.
- Business letters of Helen Millar Lowe (1897 – 1997), the third woman in Edinburgh to qualify as a chartered accountant and the second female member of the Society of Accountants in Edinburgh.
- Papers of Geoffrey Beale (1913 – 2009), scientist and founder of malaria genetics.
- Raphael Holinshed's *Chronicles* (1587), a magnificent, complete copy of the second edition of this History of Britain used by William Shakespeare as the principal source for his histories and *Macbeth*. In making this purchase, the Friends and the University have shown a determination to add great books to the collections – for research, teaching and the long-term heritage of the University.



CRC: LHSA

LHSA saw a marked increase in accessioning. 41 were recorded and key examples include the following.

- Additions to LHSA's nationally important HIV/AIDS collections.
- The Astley Ainsley Prosthetics Department Library, which includes material relating to the development of this prominent and pioneering department.
- The Paderewski Time Capsule found during building work at the Western General Hospital which inspired significant interest in the local and national press in June 2010.



EUCHMI

EUCHMI holdings were enhanced by the following.

- A set of Scottish small-pipes with drones in a common stock.
- A set of miniature great Highland bagpipes.
- An important set of border bagpipes as part of the £97,000 bagpipe acquisition programme "Enriching our Musical Heritage" supported by the Heritage Lottery Fund.

Fine Art Collections

The following works were acquired.

- *Painting as Document, Talbot Rice Gallery*, by Andrew Grassie.
- Portrait of Dr Ann Matheson by Victoria Crowe, commissioned by the University.
- Bronze bust of Sir Edward Appleton by an unknown sculptor.

Projects (a selection)

General Collections

- *Book and journal moves*: the Collections Management team relocated 25,000 linear metres of material in summer 2010. Additional flex space was identified and created in more heavily used parts of the Library of Congress Current Lending Collection relocated to the redeveloped second floor. Additional space for the heavily used “recently returned” book shelves was also identified.
- *UK Research Reserve (UKRR)*: further progress was made in relation to UKRR (a collaborative research collection between 29 UK Academic Library partners, ensuring that rare material is not disposed of without a prior scarcity check). This aided the disposal of 534 linear metres of low-use journals. This proactive approach is vital in managing lesser-used collections, and to free up space across the Library system.

CRC: Special Collections and University Archives

- *Unlocking the Celtic Collector*: this AHRC-funded project progressed well towards meeting its June 2011 completion targets. Focused on the original field notebooks of the pioneering folklorist Alexander Carmichael (1832 – 1912), the project team includes archivists and academic researchers working closely with EDINA to develop online resources. These will include Encoded Archival Catalogue Descriptions (EAD), Text Encoding Initiative (TEI) text transcriptions, Encoded Archival Content (EAC) biographical records, digital images and a number of other research tools. 400,000 words have been transcribed, eight notebooks digitised and 16 professionally conserved. Project award: £500,000.
- *The world of Reformation Britain as seen and heard in the Wode Psalter*, a three-year AHRC-funded project. The Wode, or St Andrews Psalter, comprises a nationally important collection of manuscript musical part books of the Psalms compiled between 1562 and 1592, five of which are held by University Collections. Planning proceeded towards a major exhibition ‘Singing the Reformation’ to be held in the Main Library during the Festival in 2011. Loans were secured from international partners, new exhibition cases were designed and images from all the part books were made available to researchers through the project wiki.
- *Historic Alumni Research Resource (HARR)*: scoping an historic alumni research resource made good progress in data analysis and discussions with colleagues at St Andrews and Glasgow Universities.
- *Walter Scott Digital Archive Project*: achievements include collaboration on ‘Illustrating Scott: A Database of Printed Illustrations to the Waverley Novels, 1814-1901’ (website launched September 2009), supply of images for various projects and exhibitions including publicity material for the Edinburgh Edition of the Waverley Novels (Edinburgh University Press), and online expansion of an analytical bibliography of publications on Scott since 2000 (over 500 entries).

CRC: LHSA

- *Preserving Edinburgh’s twentieth-century case notes: treating tuberculosis and World War II injuries*: a fifth Wellcome Trust Research Resources in Medical History project began in May 2009 and was completed on time and on budget in April 2010. Along with work to re-house case notes, related index cards and bound volumes were also treated.
- Wellcome Trust Research Leave Award: commenced 1 November 2009, with the majority of the grant funding the gross salary costs of a fixed-term Assistant Archivist post dedicated to addressing LHSA’s cataloguing backlog and procedures.

Museums Support Team/EUCHMI

- *Musical Instrument Museums Online (MIMO www.mimo-project.eu)*: a major European initiative, created and led by the University, to harvest the digital content of nine major musical instrument museums from their collection databases and make this available to all

through EUROPEANA (www.europeana.com). 45,000 images of instruments with descriptive metadata, 1,800 digital audio files and 300 video clips will be created, moving 40% of Europe's and 16% of the world's heritage of historic musical instruments to the public domain. Dictionaries for controlled vocabularies for musical instrument databases were improved and work on a 'Definition of Scanning Properties and Recommendations for Photographing Musical Instruments - Version 1' continued. Total project award €3.2m.



The graphic features the word "MIMO" in large, bold, black letters, with "musical instrument museums online" in smaller red text below it. To the right is a detailed image of a violin. Below the text, there is a row of icons: a camera with "45,000", a speaker with "1,800", a video camera with "300", and a globe with various national flags. Below these icons are the logos for "www.europeana.eu" and "europeana think culture". At the bottom left is "www.mimo-project.eu", in the center is the University of Edinburgh logo, and at the bottom right is the European Union flag with the text "Co-funded by the European Union".

- *Revealing the Hidden Collections*: a Scottish Funding Council SPIRIT-funded project to capture the entire cultural holdings of the University in 100 collection level descriptions, with the aim of dramatically increasing online access to our collections. This is a pan-Scottish University Museums initiative by UMiS (University Museums in Scotland).

TRG

The following exhibitions were held in TRG.

- 'Jane and Louise Wilson' (Festival 2009): an exhibition of new work from the most important and innovative artists working in film and video today.
- 'Joseph Kosuth' (Festival 2009): installed in the then newly-refurbished Georgian Gallery, this was widely agreed to be the most memorable visual artwork of the 2009 Art Festival. The project was in collaboration with the Edinburgh International Festival.
- 'An Entangled Bank' and 'Darwin in Edinburgh' (October - December 2009): coinciding with the University-wide celebration of Darwin's bi-centenary, the joint exhibitions investigated the impact Edinburgh had on the young Darwin and his continuing legacy and influence on creative art practice exemplified through the work of six invited artists.
- 'Drawing for Instruction' (February – March -Mar 2010): an exhibition of art to instruct, a project of rich diverse imagery and unusual juxtaposition. In the Georgian Gallery, 'Smugglerius' Unveiled, a sculptural and photographic installation by Dr Jeanne Cannizzo and Joan Smith.
- 'Jenny Holzer' (March – May 2010): an Artist Rooms exhibition, and the first solo show in Scotland of this American artist.
- 'They Do Things Differently There' (June 2010): curated by students from Edinburgh College of Art (ECA).

Teaching and Research Support

General Collections

The High Use Book Collection (HUB) support team corresponded with hundreds of academics to ensure that the correct material was available for use in current teaching courses, particularly material temporarily shelved on 'Reserve'.

The Shelving Team continued to support teaching and research by re-shelving material in an efficient and timely manner: HUB targets to re-shelve within 20 minutes were routinely met. However, with resource gaps in 2009, there were problematic periods when backlogs of material to be re-shelved on the upper floors of the Main Library reached peaks of c.15,000 items at one time. A flexible approach to temporary recruitment allowed the Team to overcome the worst of these situations, and work is ongoing to ensure this situation does not occur again in the future.



CRC: Special Collections and University Archives

User services: Spectacular increases in reading room demand were recorded with 16,661 items issued; an increase of 115% over 2008 – 2009. Total seminar hours was 601 (up 28%), and numbers of students attending seminars actively using collections was 760 (up 210%). The increased demand has been met, despite continued reduction in core staff resource and operational budget, by increasing curatorial staff contribution to user services, constantly reviewing procedures, re-aligning responsibilities and increasing income generation.

Teaching and other research use: The department continued to teach directly on the MSc courses Material Cultures and the History of the Book, Geography and the Archive and a host of student induction briefing sessions.

CRC: Digital Imaging Unit (DIU)

The DIU output increased by 30%, in part accomplished by the purchase of a new, faster digital camera, the Hasselblad H4. Significant projects completed for departments included scanning negatives of St Kilda for the School of Scottish Studies and glass plate portraits of mainly 20th century physicists including Einstein for the School of Physics. Work also commenced on the Veterinary Medicine Virtual Museum for the Royal (Dick) School of Veterinary Studies.

CRC: LHSA

User services: LHSA's enquiry service was very busy during the reporting period with 717 remote enquiries (up 11% on 2008 – 2009), and consultation of collections significantly increased over previous years. LHSA's enquiry work is highly regarded by users, for example: "You have been very helpful to my investigations, ...most importantly... from day one you were very thorough and friendly which has made our contact all the more enjoyable".

LHSA staff regularly assist NHS Lothian, its funders, with enquiries and also provide advice on records management; in particular the application of relevant legislation and guidelines, and collections care.

Teaching and other research use: the following seminars were offered: *History in Practice* (October 2009 and January 2010) for the School of History, Classics and Archaeology – two two-hour seminars and an orientation session for undergraduate and PhD students with displays, lectures and interactive exercises focussing on the use of psychiatry records in historical research; PhD co-supervision; *Preservation and conservation: principles and practice* (February 2010) – part of the CRC-led MSc in Material Cultures module, 'Working with Collections'; *Preservation Basics* (July 2010): LHSA led several sessions in this one-day course for library, museum and archive professionals held at the National Library of Scotland, which gave an introduction to the basic principles of good storage and handling of rare/unique material. LHSA's contribution was commissioned by the British Library for this RLUK-organised event. In addition, LHSA has begun to work with Learning Teaching Scotland to make LHSA material available to local and national schools for use as teaching resources in line with the Curriculum for Excellence.

LHSA was involved in a number of collection management and core activities to support the service as follows.

- Survey of all uncatalogued or partially catalogued material. All data collected has been compiled in a spreadsheet, and a priority led cataloguing plan devised.
- Ongoing work to catalogue LHSA material, including key collections as identified by the priority led cataloguing plan. An active volunteer programme supplemented cataloguing carried out by the Assistant Archivist (see Projects).
- Ongoing conservation work to ensure the long-term preservation of the collection including re-housing glass plate negatives, new accessions and collections for use by staff/readers; environmental monitoring; housekeeping and pest management programmes; treatment of bound volumes; production of surrogates; written and photographic documentation of all treatment; training for CRC staff on handling and crate packing for rare/unique collections; treatment of architectural plans.
- Ongoing work as part of Phase Two of LHSA's case note re-ordering project, which includes checking the order of, and gathering data to provide fully comprehensive catalogue descriptions for, all of its case note collections.

Museums Support Team/EUCHMI

Teaching, research and research support was a significant area of work and included the following.

Presentations: Dr Darryl Martin (Curator and Lecturer) presented two papers at the CIMCIM (International Committee of Musical Instrument Museums and Collections) meeting in Florence and at the Galpin Society (GS)/Association for Music in International School (AMIS) meeting in Rome in September 2009. The former specifically concerned EUCHMI; Arnold Myers (Chairman and Senior Professorial Fellow) who gave an invited presentation with Eugenia Mitroulia at the GS/AMIS/HBS conference in Rome in September 2009, and an invited presentation at the First Congress on Musical Research, Valencia, Spain, in February 2010.

Publications: the most recent book in an occasional series, 'The Historical Harpsichord', was published by Pendragon Press (USA) and included three essays by individuals affiliated to EUCHMI; the most recent GS Journal (2010) includes an article by Darryl Martin on one of the instruments in the collection (the Anonymous c.1620 Italian harpsichord).

Cataloguing and resource discovery: the National Inventory of Continental European Paintings initiative, featuring all pre-1900 continental European oil paintings, was completed and features the University Fine Art Collection (<http://www.vads.ac.uk/>); work also began with researchers from the Public Catalogue Foundation project to photograph and catalogue every oil, acrylic and tempera painting in the UK in public ownership.

Teaching and other research use: the Natural History Collections and the Geology Museum teaching collection were used extensively in undergraduate teaching and samples from the Geology collection have been used within the Scottish school curriculum by staff members from the Geology Department.

TRG

All exhibitions have an educational purpose and add to scholarship in a number of areas within the University and the community. Two specific examples follow.

'Drawing for Instruction' brought together research expertise from eight interdisciplinary departments across the University to examine how the process and product of drawing has been, and continues to be, a fundamental tool in teaching and learning. This exhibition offered staff an opportunity to reflect on the history and future of teaching practice and invited students and members of the wider public to engage with the changing face of learning in higher education.

Concurrently, the Georgian Gallery presented an exhibition curated by research staff at ECA, which explored how teaching methods have developed looking afresh at the merits of observational drawing in the acquisition of knowledge.

TRG also continued its collaboration with ECA Contemporary Art Theory Masters students. 'They do things differently there' was curated by Masters students, devised and delivered with close mentoring from the staff team at TRG. This opportunity for the Gallery to present exciting new ideas from aspiring students is a credited part of the students' academic course and their performance is assessed accordingly.



Outreach and Cultural Programming

CRC: Special Collections and University Archives

Exhibitions: exhibits in the CRC display wall and reading room case included a selection of early photographs of 19th-century Edinburgh by Hill and Adamson and fine book bindings from the 18th-century; to mark the establishment of the Princess Dashkova Russian Centre, a selection of the medals that she presented to the University on the graduation of her son Paul in 1779 were exhibited. The historic links between the University and Russia remain strong to this day with over 70 students currently enrolled.

Loans: Nicholas Hilliard manuscript, "The Arte of Limning", to the Yale Center for British Art in New York for the prestigious 'Horace Walpole's Strawberry Hill' exhibition.

Tours: Visits were from a wide range of interest groups and individuals including study tours by School of Information Studies students from the University of Wisconsin, the Scottish Universities Special Collections and Archives Group, and the Association of University Administrators.

Images: the international "reach" of the department is reflected by the countries supplied with our images. This included all the usual suspects as well as Honolulu, San Jose and Tasmania.

As ever there was a great deal of positive user comment. For example, on gaining access to our collection of early 19th-century broadsides one user commented, "There is some fantastic material there, particularly from the folder of uncatalogued loose ballads. I am very grateful for you identifying and suggesting this".

CRC: LHSA

IT: LHSA re-launched its website (www.lhsa.lib.ed.ac.uk) in October 2009; the culmination of over two years work. The site's style has been modernised and new content added including source lists, user zones, custom-google-search and online exhibitions.

Exhibitions: LHSA frequently displays collection items within University, NHS and other exhibition facilities. Highlights include: 'The Edinburgh Lunatic Asylum: Origins, Perceptions, Patients' for a Wellcome Trust Regional Forum (see below); 'Masterpieces I', 'Drawing for Instruction', and the contribution of images to NHS Lothian commemorative displays for the Royal Edinburgh Hospital (REH), the Royal Edinburgh Hospital for Sick Children and St John's Hospital.

Talks: Talks to demonstrate LHSA collections/services are given regularly for example, 'David Skae's Lectures on insanity at the Royal Edinburgh Asylum' (Wellcome Trust Regional Forum for the History of Medicine in Scotland on the REH and the history of Scottish psychiatry, Oct 2009); 'The Royal Infirmary of Edinburgh (RIE) and Women, 1870-1950' and 'Practices in Conservation and Preservation' (Feb 2010).

Articles: in 'Medical History', The 1815 Act to Regulate Madhouses in Scotland: a reinterpretation, 2009, 53: 57 - 76 and David Skae, resident asylum physician; general practitioner of insanity, 2009, 53: 469 - 88; 'An Introduction to Conservation in Edinburgh University Main Library', spring edition of The Piper, newsletter of the Friends of Edinburgh University Library.

Images: LHSA regularly provides research and images for publications, websites and displays.

Other: LHSA also participates in groups and committees within the wider history of medicine and cultural heritage community for example, the RIE Arts Committee, Bicentenary Sub-group of the REH Environment and Experience Committee and Edinburgh's Hospital Heritage project.

Museums Support Team/EUCHMI

The £37,000 EUCHMI project *Musical Instruments at Your Fingertips*, with Scottish Government Recognition Scheme funding will expand access to the Collection for young people and the general public through the creation and improvement of ICT and web resources acknowledging a broad range of learning styles, and linked from social networking websites.

Year two of the £90,000 *EUCHMI Education Project*, to open up the cultural assets of the museums to a wide audience, saw the pilot phase of the schools programme. These formal workshops are complemented by free drop-in events for families with pre-school children, and events specifically designed to support the University's Widening Participation Strategy. This project is supported by the Heritage Lottery Fund, Museums Galleries Scotland, the Friends of St Cecilia's Hall and Museum, the Russell Trust and University sources.

In late 2009, EUCHMI celebrated the 150th anniversary of the Reid Concert Hall Museum of Instruments; with an evening of musical performances and readings during which some of the instruments collected by the founder, Professor John Donaldson, were demonstrated.

EUCHMI holds the world's most famous collection of playable historic keyboards. Several recordings featuring collection instruments were made including: Michele Benuzzi, Sonatas by Domenico Scarlatti (using the 1764 Hass harpsichord). This is the third in a series of instruments from the collection that was recorded by John Kitchen, and released by Delphian Records.

As usual collection instruments were featured in the winter concert series held by the Georgian Concert Society, and in the series of Fringe Festival concerts arranged by the Friends of St Cecilia's Hall. Instruments were used in a new undertaking, the Syper Summer Concert Series arranged by the Music Department, and increasingly featured in Music Department lunchtime recitals.



The pastel *Going To The Fair* by Pablo Picasso went on loan to the Museo Picasso, Malaga from May to September 2010, for their exhibition 'Picasso and the Horse'. University

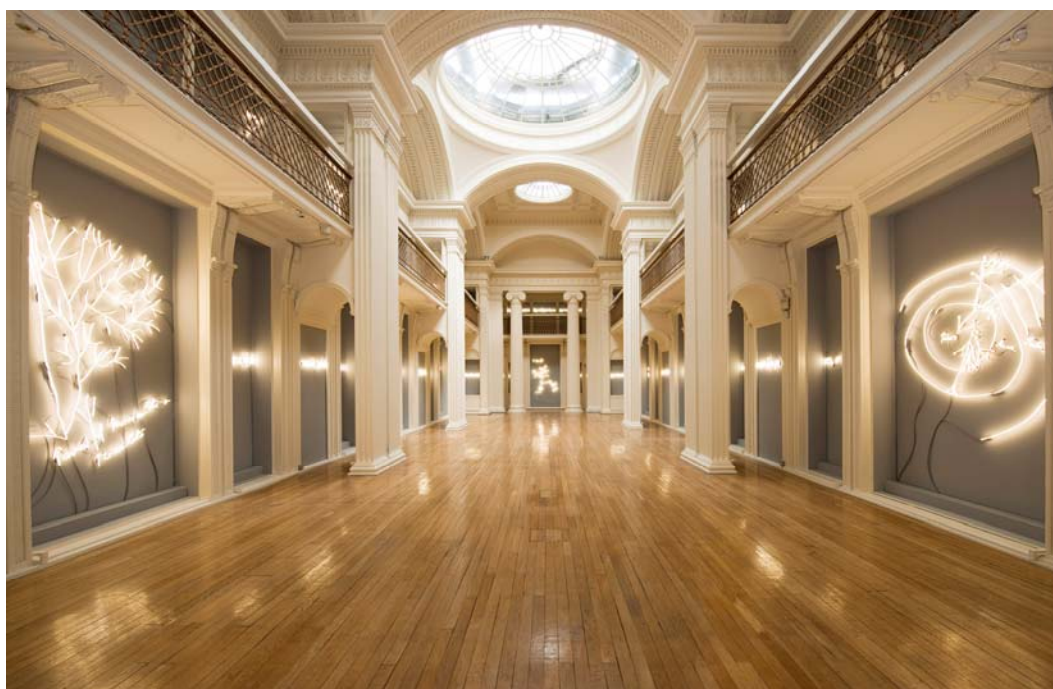
permanent displays were enhanced by a long loan in of *James VI* by Adam de Cologne from the National Galleries of Scotland, which can be seen in Old College.

The annual Doors Open Day was very successful for all the University's Accredited Collections, attracting 1750 visitors.

TRG

TRG's education programme continued to grow, doubling to nearly 4000 audience members engaging with the exhibitions. In addition to regular artist talks and Gallery tours, the following projects were of particular note.

- Festival exhibitions in 2009 broke records in attendance with over 2000 people visiting the gallery on Doors Open Day.
- The Darwin season cross-curricular workshops for secondary art and biology pupils were delivered in collaboration with Science Communication colleagues from the University. The project has gone on to be highlighted as a best practice case study on the GLOW Creativity Portal, in addition to featuring in the Times Educational Supplement and at the British Interactive Group conference.
- 2010 began with practical drawing workshops for a breadth of participants from adult learning groups and higher and further education art students to nursery school children.
- In the spring, TRG hosted a Student Writing Competition with prizes awarded for both a Critic's and a People's Choice category. This project piloted a new approach to audience interaction and the accumulated work has become part of the Artists' Rooms education archive.
- A fruitful collaboration with Artlink, Edinburgh's agency for access to the arts for individuals who experience disadvantage or disability, was ongoing. This key partnership enables TRG to work closely with this audience, engendering an atmosphere of inclusion and understanding.



Development (including fundraising, publicity and marketing)

CRC: Special Collections and University Archives

The 'Masterpieces I' exhibition created a huge impact, with coverage in all major papers and news websites. The Rare Books Librarian was interviewed live on Radio Scotland and there was also coverage on Radio 4's Today programme.

The discovery of the Edinburgh Symphony by Dutch-German composer Julius Röntgen in the Donald Francis Tovey Archive, performed at the Usher Hall 80 years ago and previously thought to be lost, also attracted widespread media interest. To celebrate the discovery, an undergraduate music student and harpist performed an extract from the symphony in the Main Library.

Staff hosted a number of VIP and "prospect" visits on particular aspects of Special Collections activity in concert with colleagues in the Development and Alumni Office.

As in previous years, images were supplied for the University Collections Calendar, official Christmas cards and other University publications.

CRC: LHSA

LHSA work to promote the collection included tours for readers, visiting professionals, students, academics and potential depositors, and the development and distribution of promotional material. In addition, LHSA capitalised on all available avenues for publicity including the re-developed website and topical news pieces in which LHSA material could be surfaced.

Museums Support Team/EUCHMI

Work on the St Cecilia's Hall (SCH) Redevelopment Project began. This aims to make SCH the principal destination for musical instrument display, teaching and performance, and to be a key cultural and ceremonial space for the University. This will also include Phase II of EUCHMI Education Project to work with new audiences; a pre-design and interpretation feasibility study for the new displays; and a fundraising campaign for the entire project.

Work to develop the future CRC Exhibitions Programme was ongoing.

TRG

In addition to the long-running funding relationship with Creative Scotland, which achieved £75,000 in the period, TRG actively fundraises to support specific additional work as follows.

- Creative Scotland: £12,000 to commission new work from Jane and Louise Wilson.
- Edinburgh International Festival: this grant funded the entirety of the 2009 Festival Exhibition, 'Joseph Kosuth'.
- Principal's Fund: £10,000 for 'An Entangled Bank'.
- Darwin Steering Committee: £3,500 for installation and £6,600 for the education programme for 'An Entangled Bank'.
- National Galleries and Artist Rooms: £8,000 toward the installation of the Jenny Holzer exhibition.

TRG has a consistent profile in the local and national press, with regular reviews and previews in publications including The Scotsman, Scotland on Sunday, The Herald, The List, The Skinny, The Financial Times and The Guardian. The Gallery achieved notable exposure during the Edinburgh Festival period when large numbers of national and international press attended and featured the exhibitions.