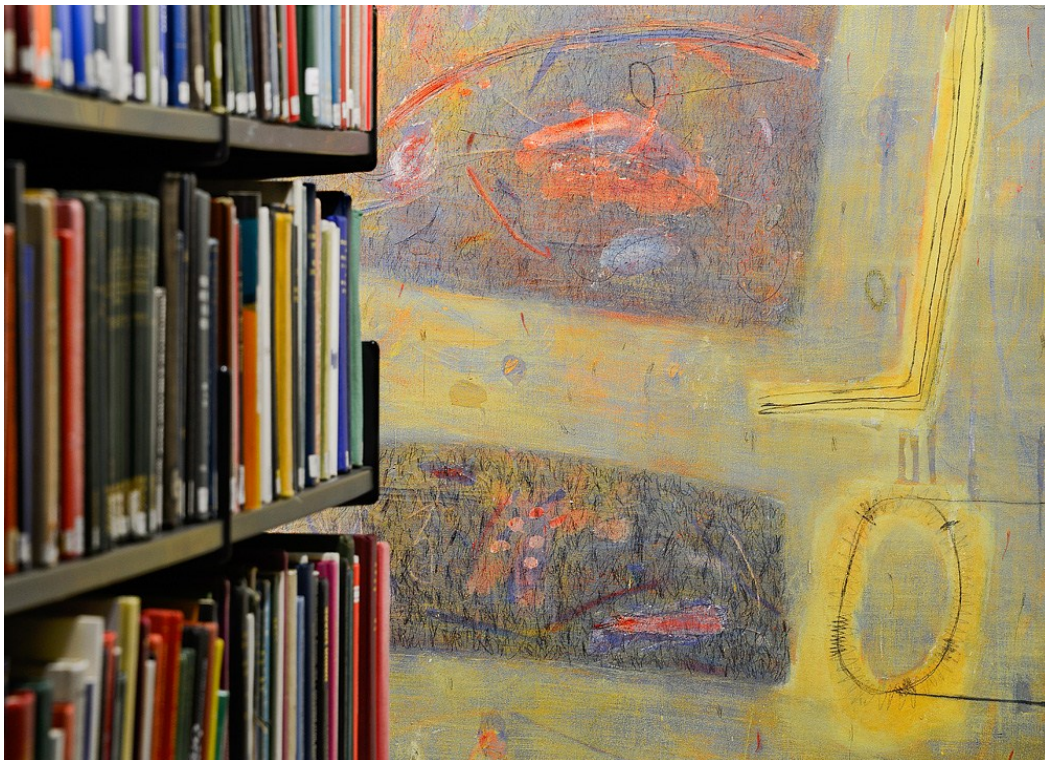




University Collections Annual Review

1 August 2011 – 31 July 2012



1. Introduction	4
2. Director's Summary	4
3. Acquisitions and Donations	5
3.1. General Collections and Collections Management	5
3.2. CRC: Special Collections and University Archives	5
3.3. CRC: Lothian Health Services Archive	5
3.4. CRC: Museums Support Team	5
3.5. Edinburgh University Collection of Historic Musical Instruments	5
4. Projects	6
4.1. General Collections and Collections Management	6
4.2. CRC: Special Collections and University Archives	7
4.3. CRC: Lothian Health Services Archive	9
4.4. CRC: Digital Imaging Unit	9
4.5. CRC: Museums Support Team	9
4.6. Edinburgh University Collection of Historic Musical Instruments	10
4.7. Talbot Rice Gallery	11
5. Teaching and Research Support	11
5.1. General Collections and Collections Management	11
5.2. CRC: Special Collections and University Archives	12
5.3. CRC: Lothian Health Services Archive	12
5.4. CRC: Digital Imaging Unit	13
5.5. CRC: Museums Support Team	13
5.6. Edinburgh University Collection of Historic Musical Instruments	13
5.7. Talbot Rice Gallery	14
6. Outreach and Cultural Programming	14
6.1. CRC: Special Collections and University Archives	14
6.2. CRC: Lothian Health Services Archive	15
6.3. CRC: Digital Imaging Unit	16
6.4. CRC: Museums Support Team	17
6.5. Edinburgh University Collection of Historic Musical Instruments	17
6.6. Talbot Rice Gallery	18
7. Collection Management	18
7.1. General Collections and Collections Management	18
7.2. CRC: Special Collections and University Archives	19
7.3. CRC: Lothian Health Services Archive	20
7.4. CRC: Digital Imaging Unit	20
7.5. CRC: Museums Support Team	21
7.6. Edinburgh University Collection of Historic Musical Instruments	21
8. Development (including fundraising, publicity and marketing)	21
8.1. CRC: Special Collections and University Archives	21
8.2. CRC: Lothian Health Services Archive	22
8.3. CRC: Digital Imaging Unit	22
8.4. Edinburgh University Collection of Historic Musical Instruments	22
8.5. Talbot Rice Gallery	23
9. Internships and volunteer placements	24
9.1. General Collections and Collections Management	24

9.2. CRC: Special Collections and University Archives	24
9.3. CRC: Lothian Health Services Archive	24
9.4. CRC: Digital Imaging Unit	24
9.5. CRC: Museums Support Team	25
9.6. Edinburgh University Collection of Historic Musical Instruments	25
9.7. Talbot Rice Gallery	25
10. Workforce development and wider sector contribution	26
10.1. General Collections and Collections Management	26
10.2. CRC: Special Collections and University Archives	26
10.3. CRC: Lothian Health Services Archive	26
10.4. CRC: Digital Imaging Unit	26
10.5. CRC: Museums Support Team	26
10.6. Edinburgh University Collection of Historic Musical Instruments	27
10.7. Talbot Rice Gallery	27

1. Introduction

University Collections (UC) consists of a group of related collections and services distributed around the University of Edinburgh (UE) and covering libraries, archives, museums and galleries. UC serves the needs of the University in teaching and research and provides a platform for cultural engagement and knowledge transfer. Other collections managed within the Colleges and Schools have a close relationship with UC for policy guidance, collections support, project development and compliance with external standards. The areas directly managed by UC are as follows.

- Director of Collections Office (DUC Office).
- General Collections and Collections Management.
- Special Collections and University Archives.
- Lothian Health Services Archive (LHSA).
- Digital Imaging Unit (DIU).
- Talbot Rice Gallery (TRG).
- Edinburgh University Collection of Historic Musical Instruments (EUCHMI).
- Museums Support Team (MST).
- UC Digital Projects.

The Special Collections and University Archives, LHSA, Art Collections and MST Collections and the DIU form the Centre for Research Collections (CRC).

Areas supported by UC, but not directly managed, include: School of Divinity Special Collections, School of Scottish Studies Archive, Ashworth Natural History Collection, Geology Collection, Anatomical Museum and Anatomy Collection, Chemistry Collection, Edinburgh College of Art (ECA) Object Collections and the Polish School of Medicine Collection.

2. Director's Summary

The task of summarising what has been a highly successful year grows increasingly difficult as University Collections continues to expand, develop and deliver across a multifarious range of activities. From acquisition to outreach, in projects, teaching and research, together with all the workforce and external development in fundraising and publicity, 2011/12 has witnessed both exponential growth and achievement.

One huge strand of work was the Edinburgh College of Art Heritage Collections Review, following the merger with the University resulting in major additions to drawings and paintings, museum objects, rare books, archives, and books and journals. Many of these holdings are already in use and the higher profile of the collections occasioned by the review is leading to further development. The four-year de-duplication project commenced, seeking to both improve the legibility of the general collections and increase vital shelf capacity, and the Wellcome Trust agreed to fund a project to surface the papers of the human intelligence pioneer, Professor Sir Godfrey Thomson, (1881-1955). In Teaching and Research Support, LHSA extended and developed their 'History in Practice' module for the School of History, and the increase in usage figures for the CRC in general, over 25%, was unprecedented. Outreach work extended as far as Estonia and Russia courtesy of the Carmichael Watson project, and in Olympic year our material on Eric Liddell featured prominently on both BBC and ITV. It has indeed been a year of great performance across University Collections which augurs well for yet greater achievements in the years ahead.

John Scally, Director of University Collections

3. Acquisitions and Donations

3.1. General Collections and Collections Management

Acquisitions: Collections Management continued to support the processing of new print acquisitions; 19,971 items were processed in 2011 – 2012. The Smith Collection, a donation accepted in summer 2011, will be catalogued and then processed in the 2012 – 2013 academic year.

ECA Merger Collections: following the merger of ECA with the University in August 2011, 670 linear metres of books and journals were moved to accommodation at the Library Annexe, and made available immediately for user requests. In June 2012, over 1,000 drawings and paintings were moved to accommodation at the Library Annexe to prevent them from suffering further damage within an inaccessible commercial store. The LA team will, in due course, support both digital and physical access for researchers to these artworks in collaboration with the MST.

3.2. CRC: Special Collections and University Archives

The Rare Book Collections have seen significant growth this year, with strong financial support from the Friends of Edinburgh University Library and the College of Humanities and Social Science in particular. Over 400 volumes were purchased from booksellers, auction sales and private individuals, on every topic imaginable. Highlights include Alan Turing's ground-breaking publication on artificial intelligence, a Dutch emblem book formerly in a library in Tibet, the first edition of *Treasure Island* and an Islamic manuscript in the Sufi tradition with paintings of Medina and Mecca. Collections acquired include some 160 books on theology and liturgy from the library of the theologian Peter Gowans, Edinburgh maps and pamphlets from a surveyor in Leith and a group of early 20th-century Russian books from the library of the Scotland-Russia Institute.

The discovery of the remainder of the archives of the Scottish Musical Society and their subsequent transfer to Special Collections adds significantly to the material already held. Archives of two student societies were acquired: the French Society and the New Scottish Country Dance Society. A further tranche of Institute of Animal Genetics/Eric Lucey films was received from the British Film Institute.

3.3. CRC: Lothian Health Services Archive

LHSA continued to bring relevant and varied items into the collection, with 43 individual accessions ranging from nursing badges to Lothian Health Board minutes. The former supplemented a pre-existing collection and formed the basis of an art installation in the Royal Infirmary of Edinburgh (RIE) and the latter ensures that the contemporary history of the NHS in Lothian is preserved for future generations.

3.4. CRC: Museums Support Team

Kurt Jackson, one of Britain's most celebrated landscape artists, gifted etchings to add to the portfolio of three etchings donated the previous year.

3.5. Edinburgh University Collection of Historic Musical Instruments

The Frank Tomes Collection of 36 outstanding instruments (mostly brasswind) was donated by Frank Tomes' widow, Susan Tomes. This collection was mounted in an exhibition in the Reid Concert Hall Museum of Instruments by Assistant Curator, Lisa Norman. A fine Smith-Watkins trumpet with its set of interchangeable lead-pipes was donated by Richard Smith. A group of guitars and related instruments was donated by Peter Forrester. Other items were donated by Fiona Donaldson and Troy Guindon.



A 7-valve trombone by Le Brun, Brussels, c.1919 (EUCHMI 6079), part of the Tomes Collection

An important two-key clarinet in D by Philipp Gottlieb Wietfelt, Burgdorf, from the mid-18th century, was purchased for the Sir Nicholas Shackleton Collection. Several items from the Andreas Hartmann-Virnich Collection of bagpipes and related items, and a very fine set of border bagpipes by George Walker, Edinburgh, c.1840, were purchased as part of the bagpipe acquisition programme, 'Enriching our Musical Heritage', supported by the Heritage Lottery Fund (HLF).

4. Projects

4.1. General Collections and Collections Management

Main Library Redevelopment Project (MLRP): Collections Management remained heavily involved with the MLRP. In February 2012, staff within the team moved up to the 4th floor temporary staff area. Correspondingly, collections were relocated from the lower ground floor to the 4th floor and the Library Annexe, with the help of move contractors. Some collections were rationalised as part of this move, mainly the map collection formerly located on the lower ground floor.

During summer 2012, the team began preparations for the move of some collections from the Library Annexe to the 4th floor and the lower ground floor in 2013. Anticipated collections for relocation include the New Zealand Collection; the Dewey Reference Collection (to be reviewed); and the .3 Dewey lending collection.

'Making Sense of the Collections' Book De-duplication Project: Collections Management was successful in a bid to the NPRAS funding allocation for IS in 2012. The project seeks to improve the legibility of the Main Library's General Collections books by withdrawing multiple copies of volumes no longer heavily borrowed. The project has the unexpected benefit of tidying up catalogue records, and stock checking for items recorded as missing. Ultimately, the project will see the legibility of the collections improve, by transforming the 2nd, 3rd and 4th floor collections into research collections (all standard loan items, as originally intended); and

will introduce capacity for over 3,000 linear metres on these floors within the Main Library – allowing us to transfer other collections in. The project team started work in mid-July and the project is expected to continue for four years, with additional funding to be secured.

HUB Collection weed: The High Use Books (HUB) Collection team completed the weed of some 9,000 items from the HUB collection in Spring 2012. Agreed criteria saw items eligible transferred into the research (standard loan) collection on the upper floors of the Library, with ineligible items passed for sale (where possible). This was the first such exercise completed since the inception of the HUB collection, and freed up space urgently required for new material relevant to current or continuing courses. This work is now integrated into the annual processes of the HUB team. It is worth noting that this project informed criteria for the 'Making Sense of the Collections' Project.

UK Research Reserve (UKRR): Collections Management worked with College Librarians and the Rare Books Librarian to review and submit two more lists of journal titles to the UKRR (<http://www.ukrr.ac.uk>) in 2011 – 2012. The first of these was low-use, short runs of print journals (totalling 82 linear metres) from the Annexe; and the second was science, technology, engineering and medicine titles included in the JSTOR collection of electronic resources (totalling 389 linear metres), from the Main Library, Library Annexe and Kings Buildings Libraries. Together, these submissions raised £12,000 (based on cost per metre) – covering the £10,000 subscription for UKRR. In future cycles, no income will be generated due to the withdrawal of funding from the Scottish Funding Council.

4.2. CRC: Special Collections and University Archives

The Wellcome Trust (WT) has provided funding totalling £65,699 under their Research Resources in Medical History (RRMH) 'Understanding the Brain' theme for a project based on the papers of Professor Sir Godfrey Thomson (1881 – 1955). Thomson's papers were discovered and donated recently and are immensely important to the study of human intelligence given his high international profile and the range of intelligence topics in which he was interested. In particular, Thomson's work was central to large scale intelligence test applications and national surveys. The project will open up the papers through conservation and cataloguing and will link to Thomson-related archives already held. The Co-Investigator on the project is Professor Ian Deary, Professor of Differential Psychology, who discovered the papers.

A further RRMH project, 'Towards Dolly: Edinburgh, Roslin and the Birth of Modern Genetics', began 1 March 2012, with the Rare Books Cataloguer and Project Archivist starting work on cataloguing offprints from the Roslin Institute and its predecessor bodies and the papers of embryologist and geneticist Conrad Hal Waddington respectively. A project blog (www.towardsdolly.wordpress.com) and Twitter feed have been launched and are attracting an increasing interest in the collections, both within the scientific community and beyond, with eight research projects currently utilising the collections and 750 hits in the blog's first four months. As the project continues, the papers of zoologist James Cossar Ewart, the records of the University's Institute of Animal Genetics and around 4,000 early 20th-century glass positive slides will be catalogued and made available, with future scope for digitisation possibilities and wider dissemination of the collections.



A photograph of JC Ewart with a zebra as part of his cross-breeding experiments, c.1900 (Ewart papers)

The WT recently awarded a grant of £10,000 for a scoping project to assess the large amount of uncatalogued genetics-related material outwith the current remit of 'Towards Dolly'. A consultant archivist and conservator produced two comprehensive reports which will shortly be submitted to the Trust with a view to seeking additional funding for a second phase of the project.

A further scoping project, 'Finding the Moment', based on the films of Eric Lucey/Research Film Unit of the Institute of Animal Genetics, was successfully completed. This was WT funded and supported by the Scottish Screen Archive, National Library of Scotland (NLS). The project also allowed us to acquire a Steenbeck machine to facilitate further work on this and other film collections.

In October 2012, the 'Carmichael Watson' project began work on the objects collected by Alexander Carmichael, which are housed variously at the West Highland Museum in Fort William and the National Museums Scotland. £221,000 granted by the Leverhulme Trust is being used to photograph, catalogue and research over 300 diverse items from small, personal and folkloric objects such as brooches, sea-bean charms and stone whorls; to tartan clothing and furnishings of Jacobite origins; domestic implements and large, ancient carved stones. The current online catalogue is being redeveloped in conjunction with EDINA to incorporate the objects, providing direct links between related manuscripts and objects and an improved image-viewing facility. Research has so far successfully connected written charms with amulets in the West Highland Museum collection, and the project is on track to complete all of its deliverables by 31 March 2013.



Sea-bean childbirth charm known as 'Tearna Mhoire'

4.3. CRC: Lothian Health Services Archive

'Unsung Heroes', a project in partnership with the RIE, ECA, Gingko Projects and exhibition consultants Amanda Game and Dr Elizabeth Goring, was completed. Historic badges and nursing archive material from LHSA's collections and oral history testimony from retired and current nurses were used to inspire new pieces by ECA staff and students from the Jewellery and Silversmithing Department. Both old and new pieces were part of a temporary display in autumn 2011 (see section 6.2) and displayed permanently in the RIE from March 2012.

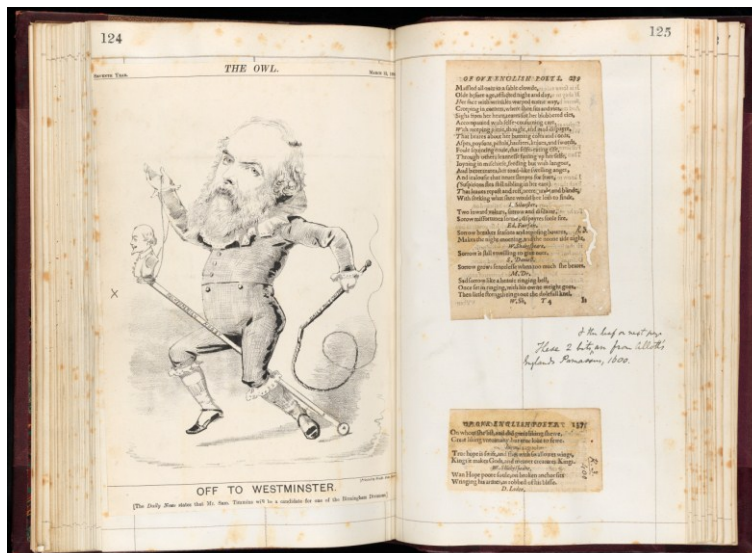
LHSA remained involved in the Royal Edinburgh Hospital Bicentenary Group to organise commemorative events and exhibitions, and to provide support to 'Oor Mad History' – a community project researching and recording the history of the mental health service user movement in Lothian. LHSA also participated in the activities of the RIE Arts Committee, including the development of a NHS Lothian-wide Arts Strategy.

In September, LHSA was awarded £86,991 from the WT's RRMH programme for a project titled, 'Cataloguing Norman Dott's neurosurgical case notes (1920-1960)', which is expected to start in late 2012.

4.4. CRC: Digital Imaging Unit

The DIU contributed images to a number of externally funded projects, including the following.

- 885 new images were added to the 'Carmichael Watson' project.
- 178 new images were supplied for the 'Beyond Macbeth - Shakespeare in Scotland' exhibition, which ran at the NLS from December 2011 to April 2012.
- 948 theatre slides were digitised.
- 43 images were submitted as part of ongoing work with the English Short Title Catalogue.



One of the items used in the 'Beyond Macbeth' exhibition – *Shakespeare Scaps Vol. VI* (H.P.Coll.311)

4.5. CRC: Museums Support Team

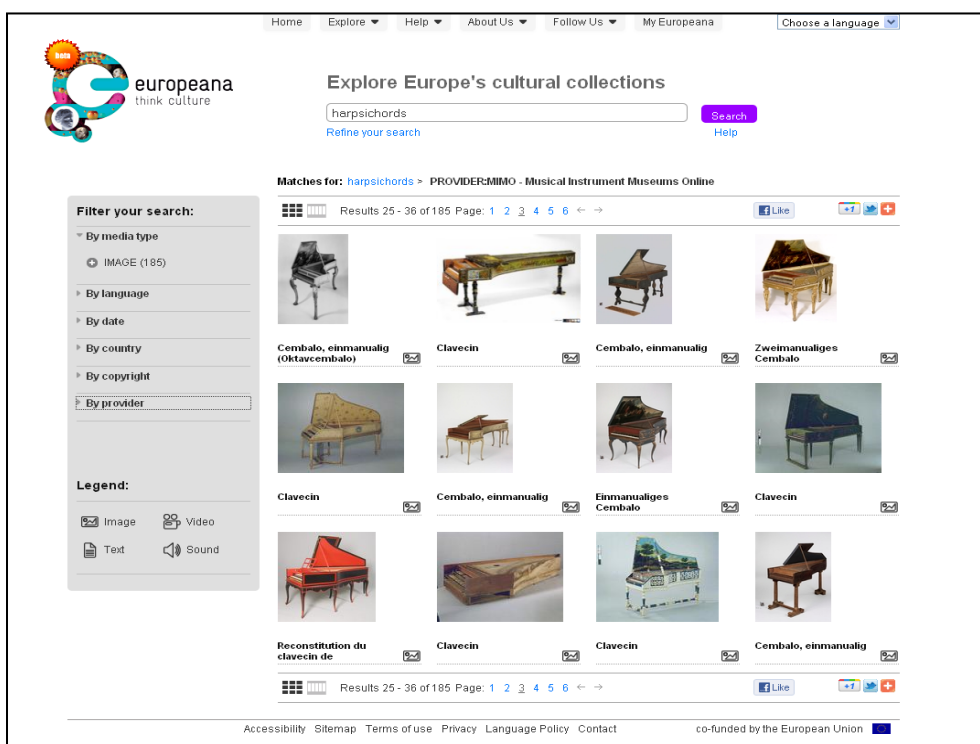
ECA Heritage Collections Review: this year-long project conducted an assessment of the purposes, significance, collections, services, working practices and potential of ECA Heritage Collections. It provides an inventory of collections and records achievements effected during the Review, from access arrangements for the Archive and large-scale collections rescues and transfers, to the creation of essential new posts to facilitate the creation and development of an ECA Collections service.

During the course of the Review, 500 linear metres of ECA archives moved to CRC, 1200 of the College's artworks were moved from inaccessible storage to the Library Annexe, 20 linear metres of records were re-housed in 126 archival boxes and 1000+ items were digitised. The oldest item in the Collection was discovered to be Bernardine of Siena, *Sermones de evangelio aeterno*, printed in Basel by Johann Amerbach, not after 1489.

A number of changes and improvements have been proposed for the individual Heritage Collection areas (Archives, Rare Books and Art Collections) which have been summarised into 30 recommendations. Priorities have been suggested for future planning purposes, though resource allocation and decisions on implementing the priorities will need to be worked through appropriate University Committees and planning rounds.

4.6. Edinburgh University Collection of Historic Musical Instruments

EUCHMI has been involved in several major projects through the year. The 'MIMO Project' ended in August 2011 and was deemed to have been a major success both within the project consortium and externally by the European Commission, Europeana and the wider musical instrument museum community. Just over 46,000 instruments were digitised, slightly higher than the original target figure but in terms of number of images, the figure was much higher than planned, with 80,557 digital images created in total (i.e. including multiple views). The project output was very slightly under in terms of the audio target, by 43 files, but just over in terms of video. The technical infrastructure that facilitates the harvesting of our museum content into MIMO-DB and on to Europeana and the classification and thesauri that underpins multi-lingual searching were established successfully. Another key output was the production of the digital standards document. Dissemination was an important aspect of the project, and one of the key outputs in this area was a virtual exhibition, produced in conjunction with staff at Europeana. The project is now in service mode and the consortium is working towards the development of a new website and the inclusion of additional collections, particularly from North American museums. Longer term, the goal is that the management of MIMO will become the responsibility of the International Committee of Musical Instrument Museums and Collections (CIMCIM).



A screenshot of the MIMO portal showing the first page when the search term "harpsichord" is used

A feasibility study was carried out for the St Cecilia's Redevelopment Project. This project was in two parts – the first carried out by Studio MB and the second by Studio SP. Both were successful in delivering information and illustrations which greatly progress plans towards the redevelopment.

The Museums Galleries Scotland (MGS) funded project, 'Drawing to Scale', was completed. This has enabled the construction of a pantograph – a frame into which an instrument is placed with a glass panel above through which a laser points and records the position of significant points on the instrument directly into a computer drawing (CAD) programme. This project was carried out by Research Assistant Eleanor Smith under the supervision of Dr Darryl Martin, and enabled full-scale plan-view drawings of 40 of the most important keyboard instruments. A paper describing this project was given by Eleanor Smith at the University Museums in Scotland conference held in Glasgow in October 2011.

An Audience Development Assistant (MGS-funded) was appointed during the year. This post was held by Antonia Grant and had two main facets – to increase audience awareness and participation in the collection activities, and to contribute to plans for the St Cecilia's Hall Redevelopment.

An Information Management Assistant was in post carrying out a project to evaluate papers relating to the Collection and to transfer them onto the Vernon Collection Management System. This post was held by Kristy Davis.

4.7. Talbot Rice Gallery

The TRG temporary exhibition programme for 2011 – 2012 was as follows.

- Festival 2011: Anton Henning: 'Interieur No. 49' and 'Ragamala'. The German artist created a colourful installation featuring brightly coloured walls, carpeting and furniture; the Georgian Gallery *Ragamala* displayed the University's collection of Indian miniatures.
- Nov – Feb: 'Beholder' was an innovative and provocative project inviting over 50 institutions and artists from across Scotland to nominate an artwork they considered 'beautiful'. Contributors included, National Galleries of Scotland, Universities of Glasgow, Aberdeen and Dundee, the Fruitmarket Gallery, Centre for Contemporary Arts Glasgow, and UC.
- Mar – May: Alison Turnbull and James Cumming. Turnbull's elegant abstract paintings – surveyed in this exhibition – dealt with systems of classification and interpretation, while a new installation drew upon *Werner's Nomenclature of Colours*, from the University's rare books collection, and minerals from the National Museum of Scotland. Accompanying this in the Georgian Gallery were modernist paintings by James Cumming (1922 – 1991) RSA, RSW, referencing themes including nature, science and language.
- May: 'Level' and 'Unoccupied'. ECA students created an exhibition about eye level, exploring both the democratic aspects of looking and its physiological limits, featuring Pavel Buchler's walls of loud hailers, *Studio Schwitters*. Students from History of Art focused on ideas from the 1960s and in particular the influence of Eastern Philosophy on art with their exhibition about nothingness.

5. Teaching and Research Support

5.1. General Collections and Collections Management

HUB Course Reserve: the High Use Books (HUB) Collection team continued to support the learning needs of undergraduate students, by working with course organisers to transfer essential print books (from reading/essay lists) into the HUB Reserve collection. There was an increase of 35% in demand for this service on 2010 – 2011; meaning a total of nearly 700 lists are managed by the team.

Main Library Re-Shelving Team: the Shelving team continued to support teaching and research, by re-shelving Main Library print collections in an efficient and timely manner. Targets to have material within the HUB re-shelved within 20 minutes were routinely met. Recently returned books backlog figures peaked at 13,773 in this year – a decrease of 12% on 2010 – 2011. This can be attributed to the flexibility of the overtime and ad hoc workers, supported by the resource envelope. It is worth noting that book loans have increased in the Main Library this year by 1.3% (6,374 additional loans).

Library Annexe request and delivery service: the Library Annexe (www.ed.ac.uk/is/library-annexe) team successfully delivered nearly 7,000 physical items or scans on behalf of users in 2011 – 2012. Unexpectedly, of the physical item requests, the biggest user group were our undergraduates – representing 27% of all loans in this category.

5.2. CRC: Special Collections and University Archives

The department has contributed in various ways to supporting teaching and research.

In 2013, the School of Chemistry will be celebrating its 300th anniversary, having established the first Chair of Chemistry in 1713. A major exhibition is planned and Special Collections and Archives staff have been instrumental in identifying and researching a wealth of primary source material throughout the time period, including the correspondence of the famous Joseph Black and archives relating to laboratory apparatus and opening of ‘new’ buildings in the 1920s. Similarly, the Department of Politics is celebrating its 50th anniversary in 2013 and has therefore been researching its origins and more recent history through the Secretary to the University’s Archives which provide a cross sectional view of University departments and functions for much of the last century. The new department was to focus on “the scholarly study of the citizen in his relations to the state”.

The MSc in Material Cultures and the History of the Book has had another successful year, with the ‘Working with Collections’ module taught by staff in the CRC. Students participated in the Edinburgh Book Fair in March and helped identify and select numerous items for addition to the University’s collections.

The MSc option ‘Geography and the Archive’ delivered jointly this year with Franklin Ginn, Lecturer in Human Geography, ran for a seventh year giving students the opportunity of interacting with primary source material and teaching them about the theoretical and practical aspects of the management of archival holdings.

A greater engagement with the student community, particularly in terms of developing employability skills, is increasingly central to CRC work and is reflected in the growing number of volunteers and interns. For instance, we have recently agreed to support financially a PhD student who is working on the Thomas Nelson archive and who will provide some preservation and listing work.

5.3. CRC: Lothian Health Services Archive

User services: LHSA’s enquiry service continued to be busy during the reporting period with c.600 remote, and frequently complex, enquiries. Usage grew by 10.5% on 2010 – 2011, demonstrating effective audience development and an increase in demand, which was coupled with maintenance of a high quality service:

“I have just received the records as promised. Thank you very much for taking the time to help me. A credit to you and your organisation!”

Remote enquiries were coupled with a significant level of consultation of collections through the CRC Reading Room. LHSA staff regularly assist NHS Lothian, its funders, with enquiries

and also provide advice on records management; in particular the application of relevant legislation and guidelines, and collections care.

Teaching and other research use: LHSA continued to offer a 'History in Practice' module for School of History, Classics and Archaeology undergraduate honours students with displays, lectures and interactive exercises focussing on the research use of psychiatry records. This module was extended and developed to three two-hour seminars (Feb – Mar 2012), and accompanied a new seminar in the MSc Medicine and Society in Modern Britain. LHSA also participated in the CRC-led MSc in Material Cultures module, with a seminar titled 'Preservation and conservation: principles and practice' and was asked to present at a Research Libraries UK training event on writing and using a preservation policy.

5.4. CRC: Digital Imaging Unit

There was another significant increase in the production of images during the year: the output of high resolution images increased from 3,814 in 2010 – 2011 to 6,096 in 2011 – 2012, a rise of just over 37%. The number of book scans was slightly lower, 5,924 compared to 6,058 in the previous year. Over the course of the year, the DIU contributed £43,216 worth of work to colleagues within the CRC.

The DIU contributed to the teaching in the MSc in Material Cultures module, which led directly to the involvement of one of the course students working as a volunteer in the Unit.

Ongoing work included further photography of our iconic items and 418 documentary images of activities in and around the Library, including exhibitions and openings, plus 82 images documenting the MLRP.

Some highlights of this year's work have included:

- Digitisation, in its entirety, of *The Image of Ireland*, which was used repeatedly throughout year in TV documentaries and by other institutions (98 new images).
- Digitisation of 45 pages of Lady Grange papers.
- Digitisation of 30 plates and text pages from Fox Talbot's *Pencil of Nature*.
- Ongoing work to digitise c.250 photos from the Carlyle Collection.

5.5. CRC: Museums Support Team

Two workshops were held for the Committee of Curators of University Collections, where curators of the major UC sites come together to exchange knowledge, examples of best practice and discuss collaborative initiatives such as public/student engagement and resource discovery.

5.6. Edinburgh University Collection of Historic Musical Instruments

The staff of EUCHMI were involved in teaching as usual. Professor Arnold Myers (along with Dr John Kitchen) taught the Musical and Technologies Class to all first-year Music students, and taught an honours option on the History of Instruments. A 'Musical Instrument Technology' honours option was taught by Arnold Myers and Professor Murray Campbell. Darryl Martin taught several Research Methods classes at both undergraduate and postgraduate level.

PhD students remain a high priority for University teaching with up to 12 organology-related PhD students enrolled. Two of those students – Pedro Bento and Panagiotis Pouloupoulos – both submitted their theses during the year.

The collection was heavily used for research support both for students from the University and elsewhere, including organised visits from students from Glasgow University, University of Aberdeen, Annesland College, Glasgow, West Dean College (Sussex), Schola Cantorum Basel (Switzerland) and others.

Herbert Heyde visited as Guest Curator for six weeks.

5.7. Talbot Rice Gallery

TRG's 'Ragamala' exhibition enlisted scholar Professor Anna Dallapiccola, a recognised expert on the subject matter, to provide new didactic interpretative materials to accompany the display. This information now resides with the collection items for future use.

'Beholder' initiated many complex debates about the nature of beauty, reflecting upon the philosophy of David Hume. This was channelled through lectures for students during innovative learning week by Dr Allan Hazlett who lectures in epistemology, metaphysics and aesthetics in the Department of Philosophy, and in depth collaboration with IASH. The exhibition was also accompanied by a symposium about beauty led by art critic Dave Beech.

TRG maintained close relationships with academic departments and provided a number of tours for students from ECA throughout the programme. Student mentoring through the extensive internship programme continued to be a strong feature in the Gallery's work. This activity realised a public outcome with 'Level' and 'Unoccupied', the collaborative academic exhibitions delivered in May.

6. Outreach and Cultural Programming

6.1. CRC: Special Collections and University Archives

Unprecedented usage figures were recorded this year. 20,564 reading room consultations took place (14,857 in 2010 – 2011). 1,196 new readers were registered, of which 453 were external (in 2010 – 2011 it was 1,138, of which 397 external). Seminar bookings have also held up well with 517 taking place. The high level of enquiries seen in recent years continues and we dealt with 8,144 enquiries.

Major contributions were made to internal exhibitions, including 'Masterpieces II' (Mar – June 2012) and 'City of Words' (Aug – Oct 2012), which drew primarily on Special Collections material, much of which had not been exhibited before. 'Masterpieces II' included the display of some 9th-century fragments of a Koran from the David Laing collection, only recently identified and conserved. Numerous exhibition loans were carried out or scheduled including a loan of the Rashid al-Din manuscript to the British Museum.

Various members of staff took part in numerous visits from professional and other special interest groups throughout the year as well as a number of significant visits by individuals such as prospective donors. A delegation from University College Dublin including their senior Library and Buildings Officers were interested to learn from our redevelopment experiences, and academics from Iowa State University wanted to gain an overview of the University's archival resources with a view to constructing a course and study tour on the history of the University. There was also a visit by Aberdeen and North East Scotland Family History Society (Edinburgh branch), who had previously been given a very well attended talk on the University's archives.

Considerable outreach work was undertaken for the 'Carmichael Watson' project. Six lectures were given as far afield as Tartu in Estonia and St Petersburg in Russia to both academic and local audiences, focussing on topics such as ethnography, the supernatural and the landscape. Media interest in the project resulted in three radio interviews and there have been four articles accepted for publication. In the last year, there have been nearly 12,500 visits to the high quality, bi-lingual online resources of which 6% were made using Gaelic pages or navigation. The project's strong internet presence includes some 53 blog

entries, 130 Twitter followers and over 320 Facebook friends, who participated in a crowdsourcing event to mark the centenary of Carmichael's birth in June 2012.

The University Archives online presence was enhanced with increased use of Twitter, Facebook and Blogger, covering such topics as Neil Armstrong's honorary degree and the theft of the University mace in 1787. Eric Liddells' life and Olympic success was the subject of work with both the BBC and ITV, and a small Liddell exhibition is in preparation.

57 enquiries were received relating to the Corson Collection, Walter Scott Digital Archive, and the life and works of Sir Walter Scott.

'Thank you very much for your very prompt reply! I've never received such great service from any request I have ever made! You're an exceptional gem in a world of cheap imitations!'

Extensive outreach and engagement work was undertaken for the Corson Collection including the following.

- Paintings featured on the BBC's 'Your Paintings' website (<http://www.bbc.co.uk/arts/yourpaintings/>), and one (John Pettie's *Disbanded*) was used to illustrate a feature in the Danish newspaper *Politiken*. Further images appeared in the monograph *The Afterlives of Walter Scott* by Dr Ann Rigney (University of Utrecht).
- Images of items from the Corson Collection now form part of a permanent exhibition in the visitor reception building at Abbotsford House, the home of Sir Walter Scott. Staff from the Abbotsford Trust have also consulted Dr James C Corson's manuscript history of Abbotsford house and his collection of images of the house and grounds in order to assist with their work on the refurbishment of Abbotsford House and Estate.
- A paper was given on items in the Corson Collection at the conference 'The Corporeal and the Spiritual in the Works of Walter Scott', Sorbonne University, Paris, France, 5-6 July 2012 and articles by Professor Peter Garside (UE), featuring images of items from the Corson Collection, have been accepted for publication in the journals *Architectural Heritage* and *Essays and Studies*.
- An article on the Walter Scott Digital Archive was submitted for publication in the Proceedings of the Conference 'Scotland-SCOTTLand', held at Castle Schönburg, Germany, 26 – 29 May 2011.

6.2. CRC: Lothian Health Services Archive

IT: LHSA has continued to focus on social media applications to attract new and wider audiences: Facebook, the blog and Flickr were supplemented with a Twitter feed from February, which has attracted a substantial following. The website was also updated to ensure that online interaction with the Archive remains fresh and engaging.

Exhibitions: LHSA collection items have been exhibited in a variety of ways this year including participation in an open day in a hospital venue, as part of the Scottish Mental Health Arts and Film Festival and in an Edinburgh Napier University curated exhibition held at the National Museum of Scotland. LHSA has also been directly involved in the curation of exhibitions including 'Masterpieces II' (see section 6.4) and 'Unsung Heroes', which featured a temporary exhibition in the CRC display wall and the subsequent permanent installation in the RIE.

"...Unsung Heroes is attracting a lot of interest! I see people come out the door of OPD3, hesitate, catch sight of the display cases and wander over out of curiosity. So I think you can consider the exhibition something of a success!"



The 'Unsung Heroes' exhibition in the CRC display wall

Talks: Talks to demonstrate LHSA collections and services are regularly given for example, 'Nursing at the RIE: a snapshot 1870-1950', a talk given to the 55th reunion of RIE-trained nurses (Sep 2011).

6.3. CRC: Digital Imaging Unit

Over the course of the year the DIU has been involved in a number of exhibitions, both directly, in terms of supplying images, and also through documenting the exhibitions themselves. These included:

- 'Wode Psalter Exhibition' - the earlier digitisation of 523 images from five originals led on to an international project to digitise the remaining psalters. This culminated in the 'Wode Psalter Exhibition' and the production of a CD of psalms.
- 'Masterpieces II' – c.50 new images were created for this exhibition, including images for exhibition panels and advertising, and documentary shots of the opening night.
- 'City of Words' – c.30 new images including the opening night.
- 'Playfair Architectural Drawings' - 54 plans were photographed for an exhibition at Riddle's Court and then Minto House, Chambers Street, including one which measured 5m x 1.6m, presenting something of a challenge for the staff.



Playfair Drawings being prepared for photography in the Digital Imaging Unit

6.4. CRC: Museums Support Team

CRC Exhibitions Programme: acting as a sequel to 'Masterpieces I', held in 2009, the 'Masterpieces II' exhibition (31 Mar – 30 June 2012) showcased some of the University's very best items (of either outstanding importance or beauty), demonstrating the richness and diversity of University collections of printed books, manuscripts, musical instruments, works of fine art, sculptures and photographs. Highlights included: Pablo Picasso's little-known painting *Going to the Fair*; rare Gandharan sculptures of the Buddha, Koran fragments; calotypes of Scottish pioneers of modern photography; important musical instruments; magnificent kimono and shawl designs and many more. Attendance doubled from the equivalent time the previous year with 1,025 people visiting the exhibition.

<http://www.ed.ac.uk/schools-departments/information-services/about/news/masterpieces-two-exhib>

Conceived as part of the 250th anniversary of English Literature celebrations, this year's Festival exhibition, 'City of Words: Writers, Readers and Critics in Edinburgh' (3 Aug - 27 Oct 2012) told the fascinating story of how the writing, reading and criticism of literature have been entwined in Edinburgh over the past quarter millennium. The exhibition displayed books, including signed and first editions, rarely seen letters and other artefacts illustrating the life and work of writers, critics and students involved in the study of literature at the University and the literary life of the city. With a month still to run, the exhibition had attracted over 1,500 visitors.

<http://www.ed.ac.uk/schools-departments/information-services/about/news/city-of-words-exhibition>

<http://libraryblogs.is.ed.ac.uk/cityofwords/>

The CRC Exhibitions Programme is generously supported by the Friends of Edinburgh University Library.

Display Wall: the display wall programme saw the display of prints of the 2012 UE Calendar – this year comprising images of our unique musical instruments collection at St Cecilia's Hall. Our programme continued with the display of high-quality digitised prints of Japanese Kimonos taken from Ryūshi Mutō, Moyō hinagata Nanba no ume. Tōkyō: Suhara Tetsuji, Meiji 19 [1886]. The stunning oriental kimono patterns offered insight into high fashion in Japan. No other copies of this particular work have been located elsewhere in Scotland or the rest of the UK.

2010 – 2011 saw requests for loans out of existing works from the fine art collection outnumber new acquisitions. A portrait of Bishop Robert Leighton went on loan to the Scottish National Portrait Gallery as part of their new display 'Reformation to Revolution'. 77 items from the Lister Collection went on temporary display at the Royal College of Surgeons of Edinburgh (Feb – Sep). Hans Tisdall's tapestry *Armada*, featured in 'Weaving the Century: Tapestry from Dovecot Studios 1912-2012' at Dovecot Studios (July – Oct), and *Still Life* by Lesley Hunter added to the City Arts Centre's 'Lesley Hunter: A Life in Colour'. Two works from our extensive collection by William Johnstone went on display at Hawick Museum in 'His land, William Johnstone OBE'.

6.5. Edinburgh University Collection of Historic Musical Instruments

The Audience Development Assistant arranged a series of events through the year. The combined audience attendance at these events was 480. Both collection buildings were open during Doors Open Day and attracted over 900 visitors between the two venues.

Several collection objects were included in the exhibition 'Masterpieces II', held in the Main Library Exhibition Gallery.

Instruments from the collection were used throughout the year for various recitals organised by the University, the Friends of St Cecilia's Hall and other groups. Total audience figures to those events is approximately 3000. In addition, a bass clarinet was lent for several performances in London, including a Prom Concert.

Papers were given at international conferences by Arnold Myers and doctoral candidate Hayato Sugimoto at the first Portuguese conference on organology in Aveiro; Arnold Myers also gave a presentation at the International Bagpipe Conference in London; Darryl Martin, Arnold Myers (with Bradley Strauchen and Jocelyn Howell) and doctoral candidates Hayato Sugimoto and Sarah Richardson gave presentations at the American Musical Instrument Society (AMIS) meeting in New York; Arnold Myers (with Murray Campbell and Sabine Klaus) and doctoral candidate Lisa Norman (with John Chick) gave presentations at the Historic Brass Society meeting in New York.

6.6. Talbot Rice Gallery

TRG runs a programme of outreach projects for each exhibition, including public talks, workshops, symposiums and tours, some of which are especially tailored for people who experience sensory impairment.

During the Festival exhibitions, a particular highlight was the launch of *Pandora's Light Box*, a permanent sound installation in the TRG devised by a group of visually impaired Gallery visitors, poet Ken Cockburn, ceramic artist Frances Priest and Music Technologist Martin Parker from Sound Design in the School of Music. The Gallery also developed activity with the deaf community through the Engage Scotland funded 'Everyone' project. This took the form of a physical theatre performance night, a British Sign Language (BSL) interpreted tour and commissioning a BSL poet to respond to the Anton Henning exhibition.

'Beholder' was an opportunity to bring together the arts community from across Scotland. TRG hosted an *Artachat* event with participants presenting their rationale for selection whilst the audience shared objects they had brought along that they considered to be beautiful. A major symposium responding to the themes raised by the exhibition drew an informed and engaged audience.

The student-curated exhibitions hosted a lively programme of events including performance art, yoga classes and public talks.

7. Collection Management

7.1. General Collections and Collections Management

General collections management activities: the Collections Management team has continued to support activities across the sites within 2011 – 2012. In particular, guidance has been given to colleagues in ECA with regards to de-duplication and collection legibility. Re-classification of this collection is expected, which will involve re-labelling and relocation of the entire collection in 2013. We have also supported the layout and legibility of the East Asian Studies Collection and the Music Collection within the Main Library.

Additionally, a new recording process for collection transfer, relegation and disposal is fully bedded in to the team workflows, providing more accurate data than was available previously. Work is ongoing to improve the transfer of items between General and Special Collections, in particular items published pre-1850; but also planning for the future transfer of items published post-1850 but pre-1900.

Collection withdrawals – sale: the Collections Management team have established a good working relationship with the company AnyBook (www.anybook.biz). For all non-sensitive

collection withdrawals in the Main Library, AnyBook now work with the team to attempt to sell all items no longer required within the collection. Profits are returned to the Library materials budget. Where items cannot be sold (after 100 days on the marketplace), they are recycled.

7.2. CRC: Special Collections and University Archives

The merger with ECA posed a number of collections management problems many of which will be addressed via the implementation of the ECA Heritage Collections Review, but as part of the review process approximately 255 linear metres of Archives were transferred from the College to the CRC in January. The transfer of material at this early stage of the Review was necessitated by building works taking place above the College's main archive store and the former Secretary's Office, which made them vulnerable to physical damage and posed a significant security risk.

This transfer comprised approximately 55 linear metres of catalogued material, which forms the core of the College's institutional archive and approximately 200 linear metres of un-catalogued material which was rapidly surveyed and appraised by the ECA Heritage Review Archivist prior to transfer.

A considerable volume of modern non-archival records was identified in both locations, and survey lists and appraisal recommendations were passed to the College's Deputy Head of Administration for further action. These records were subsequently transferred to the appropriate University modern records stores or confidentially disposed of as appropriate, ensuring the University's compliance with legislative requirements and creating much-needed capacity for future records storage on the College campus.

Between February and May, a further 13 records surveys were undertaken across the College campus, focussing on departments, services and stores which had been subjected to greatest change by the merger process (specifically, departments which had ceased to exist, or where staff re-structuring had taken place). This resulted in the identification and transfer of a further 42 linear metres of archive material to the CRC.

The Archives and Manuscripts catalogue was soft launched, making available online in one place the majority of EAD catalogue records created since 2000, including data retroconverted from earlier systems. New catalogue data is being regularly added.

A successful trial of Archivists' Toolkit suggests it is likely to become the basis of the CRC Collections Management System. A more rigorous examination of this system in conjunction with colleagues in Digital Library is planned, which will look at how it fits into wider digital architecture.

A major update of the 'Recent Publications' section of the Walter Scott Digital Archive was undertaken and over 600 new images will be made available in the updated version of the Luna database 'The Walter Scott Image Collection'.

A pilot version has been developed of an online guide to Edinburgh University Library's Scottish literary manuscripts.

There was continued invaluable cooperation with Caroline Scharfenberg (Book and Archive Conservation Services Ltd), who provided extensive support for the long list of our loans to the National Library's Shakespeare exhibition, in terms of preparation, condition reporting and conservation. Caroline also continued work on the conservation of our iconic items focussing particularly on *The Indian Primer*.



Caroline and her team working in the CRC Conservation Studio

7.3. CRC: Lothian Health Services Archive

LHSA was involved in a range of collection management and core activities to support the service as follows.

- Ongoing work to catalogue LHSA material, including key collections as identified by the priority led cataloguing plan. An active volunteer programme supplemented cataloguing activity.
- Ongoing conservation work to ensure the long-term preservation of the collection and enable access including re-housing glass plate negatives, new accessions and collections for use by staff/readers; environmental monitoring; housekeeping and pest management programmes; treatment of bound volumes and loose sheet material; production of surrogates; written and photographic documentation of all treatment; training for CRC staff on handling and transit packing for rare/unique collections.
- Ongoing work as part of phase two of LHSA's case note re-ordering project, which includes checking the order of, and gathering data to provide fully comprehensive catalogue descriptions for, all of its case note collections.
- Participation in the annual CRC stock check.

7.4. CRC: Digital Imaging Unit

The first and largest phase of the server re-processing was completed. This has made c.15,000 images available to the CRC staff via the CRC-Images Catalogue and will form the basis of a more permanent Image Management System when it is implemented.

Phase 2, master re-processing, is now 50% complete, and this will provide significantly improved archival standards and increased long term security of the digital archive.

Images Online – over the year the DIU staff has worked closely with colleagues in DLS, particularly Scott Renton, to provide online access to our image collections for staff, students and the general public. This service, which uses Luna software, will go live in autumn 2012.



Screen shots from the online Image Collections

7.5. CRC: Museums Support Team

Museums Accreditation Scheme: previously accredited collections (EUCHMI, Talbot Rice Gallery/Fine Art Collections, Geology Collection and Natural History Collection) completed returns to this UK-wide validation scheme. Preparatory work to enable the Anatomical Museum Collection to apply for Accreditation was undertaken.

All movement and rehanging of paintings throughout the year could not have been possible without the invaluable support of Estates and Buildings.

7.6. Edinburgh University Collection of Historic Musical Instruments

One further technical drawing, of the clarinet in A by Kaspar Tauber, Vienna, c 1810, was published, prepared by Assistant Curator Melanie Pidocke.

John Raymond, Assistant Curator, undertook all of the keyboard collection tuning and maintenance during the year. The keyboard collection was well used for concerts and recordings throughout the year, in particular in the concert series organised by the Georgian Concert Society, the Friends of St Cecilia's Hall and Museum, and the Reid School of Music (including the Syper Summer Concerts).

The clarinet storage project, funded by MGS and the Sir Nicholas Shackleton Fund, has provided the stored clarinets with full-length supportive cushions. This work was undertaken by Melanie Pidocke.

The collection was included with others within the University in the first wave of Accreditation submissions, completed in June.

8. Development (including fundraising, publicity and marketing)

8.1. CRC: Special Collections and University Archives

Plans to develop the collections using external funding have advanced significantly this year. In particular, we have scoped and costed a major project to catalogue, preserve and digitise

the David Laing manuscript collection, containing some 500,000 documents. This would build on the success of existing externally-funded projects such as ‘Carmichael Watson’ and ‘Towards Dolly’.

8.2. CRC: Lothian Health Services Archive

LHSA continued to promote the collection and associated services including, for example, tours for NHS Lothian staff, potential depositors, school placement students, professionals from related organisations, and specialist groups. Promotional material continued to be developed and distributed.

8.3. CRC: Digital Imaging Unit

The DIU has played an important supporting role in a number of development activities over the year, most notably through the supply of images to complement the written text in funding bids. These have included:

- ‘St Cecilia’s Hall Redevelopment Project’ – 50 new photos were taken to document the present condition of building and these were accompanied with around 30 existing images of musical instruments in the EUCHMI Collection.
- ‘The David Laing Collection’ – c.90 new images were taken and these were backed up through the delivery of a further 200 or so existing image highlights of the collection.



Islamic Devotional Work, one of the items in the Laing Collection (Or.Ms 172)

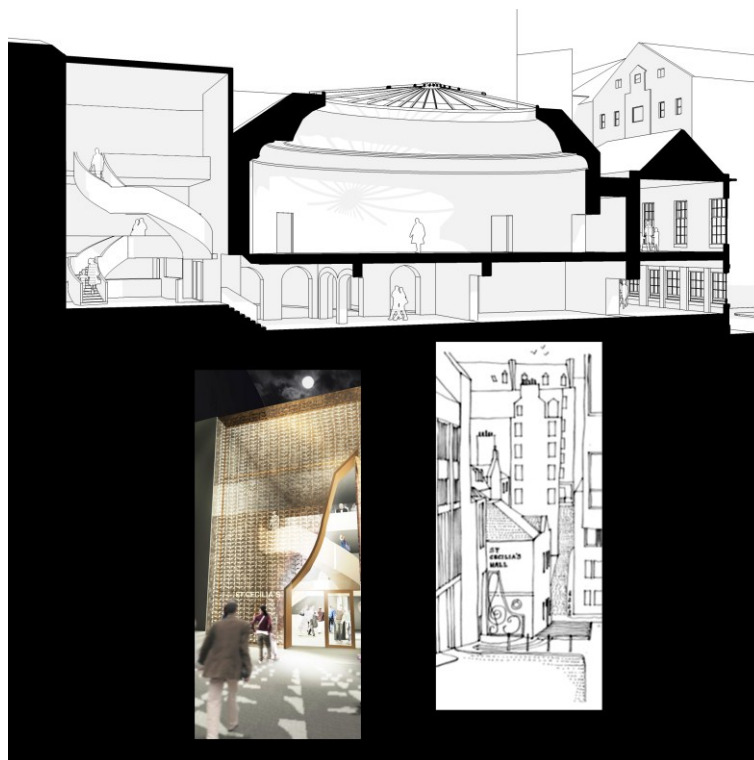
The DIU also played a key role in the development and support of the CRC Facebook page, supplying images of collection highlights or events and activities to ensure that page was regularly updated to maintain public interest.

8.4. Edinburgh University Collection of Historic Musical Instruments

The Collection advertises in the Landmark Press guide to Edinburgh which generates good numbers to the museum displays throughout the year.

The main focus of collection development through the year has been the ‘St Cecilia’s Hall Redevelopment Project’, which has become L&C’s flagship project for the next few years. The total cost of this project will be £6,400,000 of which over £2,000,000 has already been pledged (including a lead donation of £500,000). Funding applications have been prepared and submitted to Creative Scotland and the HLF, and addition bequests and other sources of funding have been identified. In addition to the feasibility study (see section 4.6), the

University commissioned a similar study by Page\Park Architects for the whole building which is leading the call for the next development stage of the process including the appointment of architects.



A composite image showing an artist's impression of St Cecilia's Hall following redevelopment (image from Page\Park)

The collection has received considerable publicity in the written press for our contribution to the MGS Interns Programme.

A new EUCHMI website is under preparation and will go live in 2012 – 13. The present website remains particularly busy with approximately 25,000 hits annually.

8.5. TRG

Fundraising: in the period TRG received £90,000 of funding from Creative Scotland in support of the exhibitions programme, this is an increase of 20% on the previous period. An additional £25,000 was agreed in support of Assistant Curator, Equality and Diversity, with this post beginning its delivery phase in the period. Around £8,000 additional funding has been levered from both internal and external sources in support of the programme.

Publicity and marketing: the Gallery received particular acclaim and coverage during the 'Beholder' exhibition. In addition to appearing on the cover of *The Times*, the exhibition was described by Neil Cooper in *The List* as a '[g]loriously disparate jumbled-up wonderland of art for art's sake that's a joy to wander through', and by one visitor as an '[a]bsolutely fascinating exhibition - in particular the use of captions to explain each contributors idea of Beauty - it opens up the mind to many possibilities'.

Anton Henning's exhibition 'Interieur No. 493' also received significant critical acclaim. Moira Jeffrey stated, '[i]t is executed with such commitment and flair and a seizing of control that this becomes an unmissable show' (*Scotland on Sunday*, 21/08/2011), and Susan Mansfield that 'Henning, by making a celebration of his freedom, gives the viewer the freedom to say

what they think' (*The Scotsman*, 06/07/2011). A comment in the Gallery visitor book described the exhibition as '[d]isturbing, eccentric and stimulating'.

9. Internships and volunteer placements

9.1. General Collections and Collections Management

With the support of the established programme in the CRC, Collections Management have introduced volunteer programmes in 2012. Our first volunteer began in March and worked up to the end of semester two. He experienced tasks relating to the services delivered across the department (including the Library Annexe), and also spent time with colleagues at the Law Library, the Main Library Helpdesk, in E-Resources, and Acquisitions and Metadata Services. These cross-departmental visits were coordinated by Collections Management, which received the following feedback from the volunteer.

"The months that I spent volunteering were not only very insightful but also well organised. I had a structured timetable to follow and was given other useful reading materials to complement this...I very much appreciated and valued this placement at Edinburgh University Library and know it will help me on my course and future career."

Development of the volunteer programme has continued, and there have been two placements thus far – with other individuals contacting us to note their interest in any future opportunities.

9.2. CRC: Special Collections and University Archives

The Scottish Musical Society archives arrived with a dedicated volunteer who has sorted, cleaned and created a preliminary catalogue. Other volunteer work has included listing of Christopher Murray Grieve papers, further cataloguing of the Laing Charters (some of which is already available in the online catalogue), and keying of legacy accession records.

The PhD studentship in collaboration with the School of History, Classics and Archaeology which is focussing on the archives of the Polish School of Medicine at UE, and related collections, is progressing well. The specifically archive-focussed element will take place during 2012 – 2013 following training via the Centre for Archive and Information Studies at the University of Dundee.

Volunteers have been employed to develop more detailed handlists for the Papers of MacDiarmid/C. M. Grieve (Coll-18) and Norman MacCaig (Coll-69).

9.3. CRC: Lothian Health Services Archive

LHSA continued to support an active volunteer programme in both the archive and conservation fields. The 'one-day volunteer' piloted in 2010 – 11 was offered twice, with both individuals going on to take up longer term placements with the Archive. During the reporting period, a total of eight individuals gained valuable work-based experience in order to develop their careers in the sector.

"Thank you so much for this volunteering opportunity. My practical cataloguing experience was pretty much non-existent, so this past five weeks have really helped to build my confidence in this area through learning useful practical skills."

9.4. CRC: Digital Imaging Unit

We had two volunteer placements over the year: Sara Hines researched 84 more images to be added to the Bridgeman Art Library. She also rehoused and researched the Cavaye

glass slides of Grand Tour Europe to prepare them for digitisation (currently only hand-coloured slide completed).



A glass slide from the Cavaye collection, showing the Temple of Saturn in the Forum in Rome

Thomas Whitehead has been involved with the building of Bookreader (page turner) objects for Luna. To date, two books have been completed with the third well underway (a total of 1452 pages when completed).

9.5. CRC: Museums Support Team

Chia-jung Kuo (Jade), an academic intern (MSc Renaissance to Enlightenment) from the History of Art Department, continued the theme of portrait research from the previous year's internship.

9.6. Edinburgh University Collection of Historic Musical Instruments

Catherine Peck worked with EUCHMI and MST as one of the first 20 MGS paid interns, funded through the Heritage Lottery Fund Skills for the Future scheme. Competition for these internships was extremely competitive with over 3,500 total applications, and 240 to EUCHMI alone. Catherine worked with staff, students, volunteers and the Friends of St Cecilia's Hall to develop skills in collections management, education and research support activity. Her internship culminated in a temporary exhibition at SCH, 'Painting Music – an exhibition of decorated treasures from Edinburgh University's historic musical instrument collection'. It is the intention to apply to the scheme again in 2013.

9.7. Talbot Rice Gallery

TRG provided placements for two undergraduate interns and four postgraduate interns from History of Art during the period. The postgraduate interns developed the 'Unoccupied' exhibition, gaining experience of curatorial practice, working with artists, administering the loans process and other exhibitions planning and administration.

Volunteers worked throughout the year to assist with daily operational demands. Additional, activity from the volunteers included the creation of a 'zine' called *Impression*, led by Jeni Cumming, in relation to 'Beholder', and volunteers also lead tours of the Gallery.

10. Workforce development and wider sector contribution

10.1. General Collections and Collections Management

Managers programme: in 2011 – 2012, two Supervisors from the Collections Management team completed the 'Endorsed Development Programme for Managers' accredited by the Institute of Leadership and Management. This involved attending one full-day session per week for ten weeks, covering such topics as discipline and grievance, motivation and managing budgets.

Professional qualifications in Library Management and Conservation: with funding support from the IS Staff Scholarship Scheme, two members of the Collections Management team have commenced postgraduate distance learning programmes at Northumbria University. One team member is completing her Masters qualification in Information and Library Management; the other is studying for a Masters in Preventive Conservation.

10.2. CRC: Special Collections and University Archives

Arnott Wilson participated in an event and discussions on shaping the Strategic Framework of the Scottish Council on Archives 2012 – 2014 and Joe Marshall presented a paper at the Chartered Institute of Library and Information Professionals Rare Books Conference on 'Exhibiting the Printed Word'. Graeme Eddie attended a copyright training event to help cope with the increasing complexity of copyright enquires both in Special Collections and beyond.

10.3. CRC: Lothian Health Services Archive

Ruth Honeybone assumed the LHSA Manager role in May 2012, and Laura Gould became Archivist, as part of a local re-structure. Ruth continues to sit on the Institute for Conservation Scotland Group Committee, acting as treasurer.

Stephen Willis, Archive Assistant, completed a MLitt in Archives and Records Management by correspondence, funded by the IS Staff Scholarship Scheme.

LHSA staff contributed to the Scottish Council on Archive pilot scheme to create a robust self-evaluation scheme, and received positive feedback on the quality of collection storage provision and the strength of collaborative working across the CRC.

10.4. CRC: Digital Imaging Unit

Andy Grout, who had managed the DIU since its conception, retired from the University in December 2012, his place was taken by Norman Rodger. The latter was previously involved in the MIMO project and continues to represent the MIMO partners, as well as the University, as an active member in the Europeana Network.

As part of a review of workflow procedures, the DIU team undertook a short fact-finding tour of comparable units in the UK – the Bodleian Library in Oxford, the Tate Gallery in London and John Rylands Library in Manchester. The trip proved extremely useful and it is hoped that this will lead to ongoing dialogue between institutions.

10.5. CRC: Museums Support Team

Jacky MacBeath continues as the University Director on the Board of MGS, helping to shape the organisation from a membership to a national development body. She continues to represent UC on the University Museums in Scotland group (www.dundee.ed.ac.uk/umis), acting as secretary.

Anna Hawkins was appointed to the post of Collections Assistant (with special responsibility for ECA Collections).

10.6. Edinburgh University Collection of Historic Musical Instruments

Darryl Martin was appointed an external examiner at the London Metropolitan University, examining the various musical instrument practice courses there. He is also on the executive board of CIMCIM and on the board of MISSN (the UK musical instrument curators group). In addition, he was an independent peer-reviewer for articles in the *Galpin Society Journal* during the reporting period.

Arnold Myers is on the executive board of CIMCIM and AMIS, the committee of the Galpin Society, and is the Vice President of RIdIM (Association Répertoire International d'Iconographie Musicale) and on the editorial board of *Studies in Music, Dance and Theatre Iconography* and the *Historic Brass Society Journal*.

10.7. Talbot Rice Gallery

In October 2011 Rachel Thibbotumunuwe started in the Gallery as Assistant Curator (Equality and Diversity) on a two-year Creative Scotland funded post. She has been working on embedding equality and diversity principles into the Gallery's ethos and programme with particular attention to policy, audience engagement and programming.